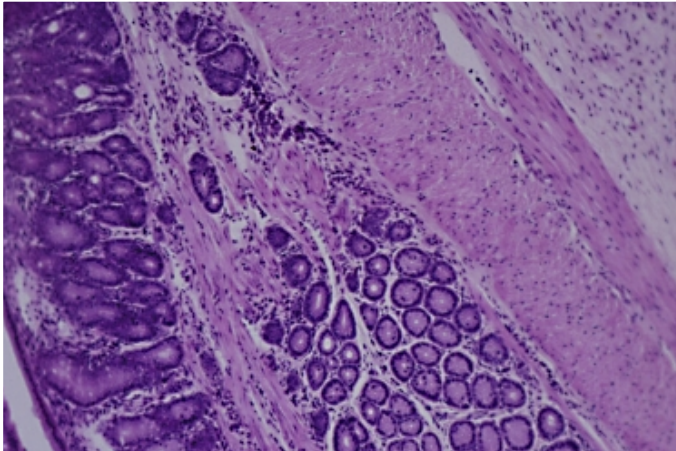
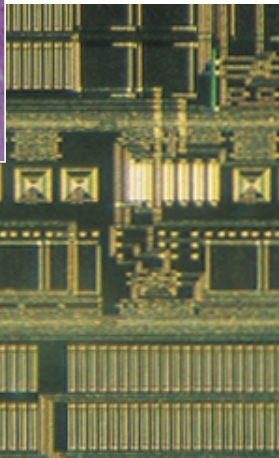




The PM10SP — Outstanding Performance, Compact Design, Simple Operation And The Best Cost-effectiveness in Its Class.



Monkey Ileocecum



IC for photometry

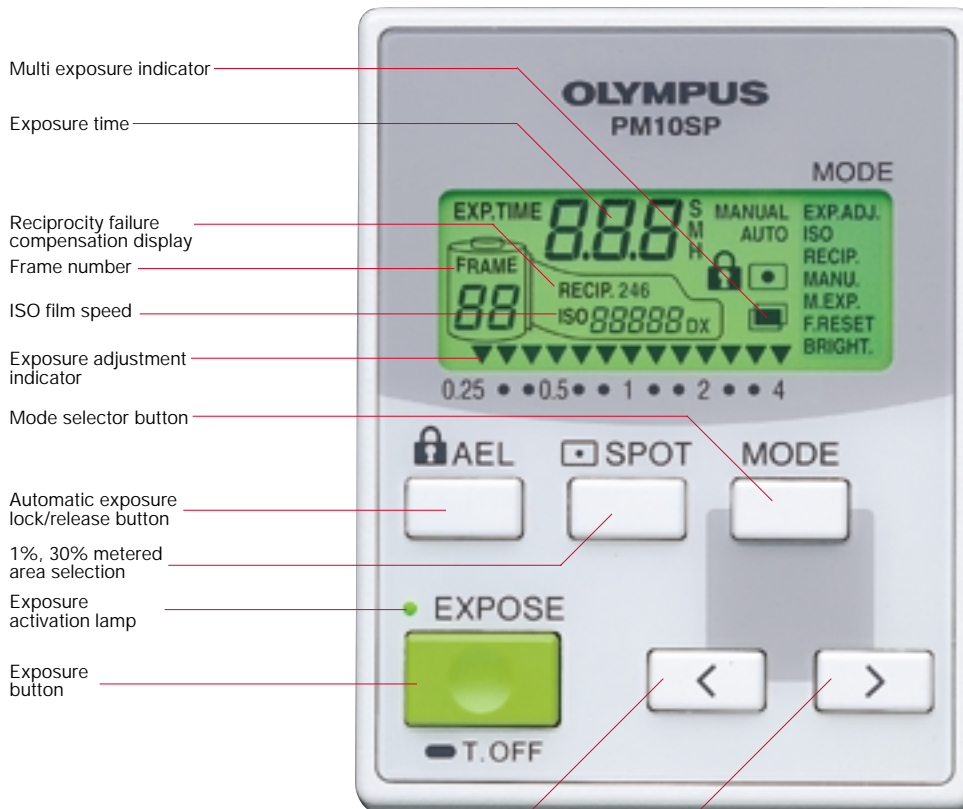
A full range of top level functions

• This latest model in the PM series is designed to perform all the tasks required for routine brightfield observation, both in biology applications and general industrial photography. Remarkably economical in price, it offers a full range of highly functional mechanisms which meet the needs of today's most demanding professional users.

• Among the PM10SP's select functions are 1% spot measurement, 3 zones of reciprocity failure adjustment, Auto/Manual/Time measurement modes and AE locking. 35mm operation features a MULTI.EXP. mode to accommodate multi-exposure photography.



Life size



Multi exposure indicator

Exposure time

Reciprocity failure compensation display

Frame number

ISO film speed

Exposure adjustment indicator

Mode selector button

Automatic exposure lock/release button

1%, 30% metered area selection

Exposure activation lamp

Exposure button

Selector buttons



Simple operation based on easy-to-read LCD display

- The control box features a minimum of buttons to ensure simple, straightforward operation. Settings are clearly shown on the LCD display and changed by simply pushing the buttons. 35mm/large-format camera selection is performed automatically.
- Photography conditions are easy to confirm even in the dark, thanks to the clear graphical display of shutter speed, measuring area, film number, camera format, exposure compensation and compensation for reciprocity failure.

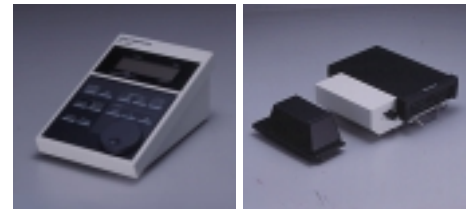


Extend your capabilities with PM series accessories

- Compatibility with large-format and Polaroid camera operation as well as 35mm SLR. For 35mm film, DX code sensing is automatic, to ensure correct ISO setting every time. 35mm film loading/winding/rewinding are all automatic, to prevent setting and operating errors.
- Extra editing convenience: data imprinting units are available for 35mm and Polaroid 3 1/4x4 1/4 cameras.
- Foot switch available for foot-operated shutter release.
- A variety of adapters for different kinds of microscopes and a wide range of magnification photo eyepieces are also available.



Camera backs and adapters for camera backs



Data imprinting control box

Data imprinting unit

Convenient palm-sized control box saves desk space

The palm-sized control box saves desk space, and enables setting adjustments to be made without unnecessary hand movements. The ability to confirm operating conditions without looking up lets the user work more efficiently.

100% light Path.

1% spot measuring to accommodate specimens for fluorescence observation

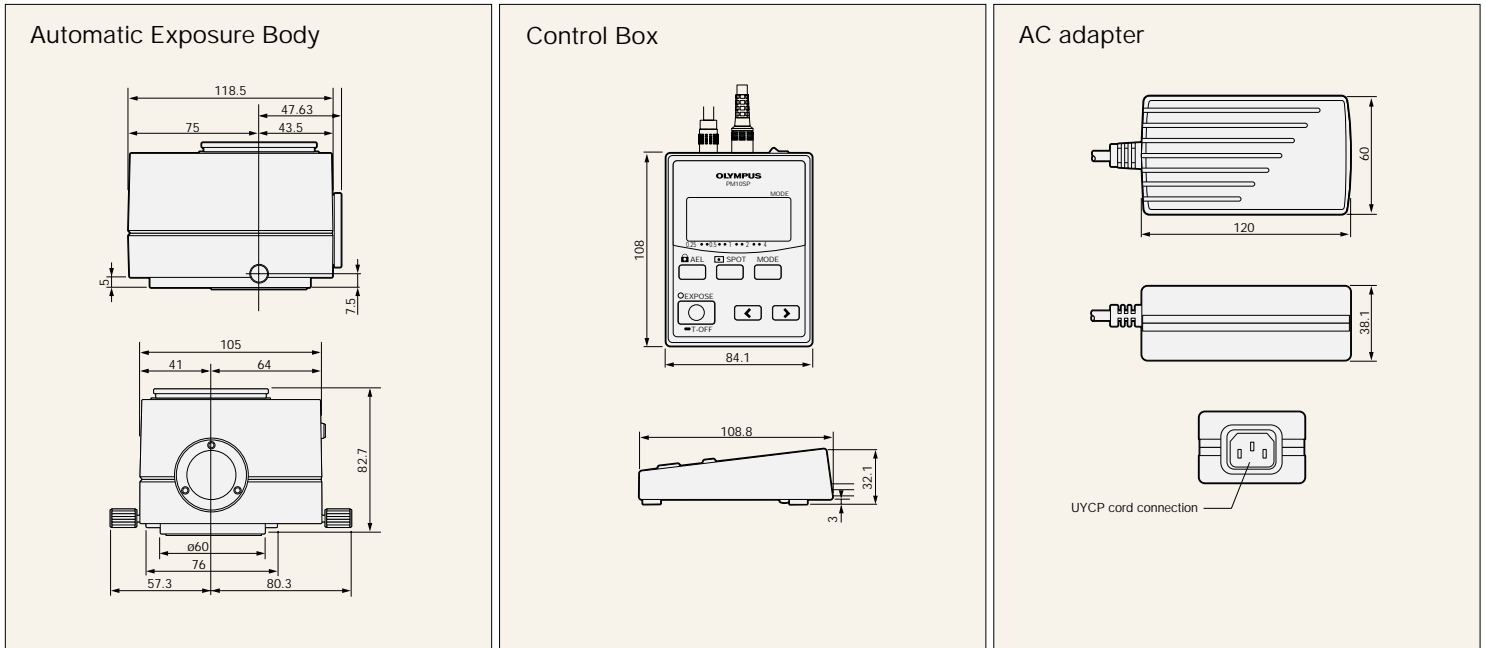
- The PM10SP employs Olympus-developed original IC measuring. Highly precise exposure control is possible through 30% average measuring (suitable for brightfield observation) and 1% spot measuring for both scattered specimens in darkfield observation and observation of bright fluorescence specimens.
- The 100% light path with built-in memory allows 100% of the light to reach the film. Accurate metering of 50% of the light intensity allows 50% of the light to be diverted to the viewer for easy framing, even for dark specimens. The anti-vibration shutter mechanism combined with direct 100% exposure capability (performed by pushing the mirror aside with a cam) ensures clear, sharp pictures even at high shutter speeds.

SYSTEM DIAGRAM

Specifications

Item	Specifications
Photometric modes	Auto mode/ Manual mode/ Time mode
Light distribution	Measuring Viewer: 50% Meter: 50% Exposure Camera: 100%
Photocell	Split type (1% and 30%) silicon-photodiode (Olympus developed)
Measured area	1% spot / 30% average
Auto exposure adjustment range	1/125 sec.-21.2 min. (35mm camera, ISO100, reciprocity failure adjustment: standard[4])
ISO setting range	3-25,600(exposure compensation 1.00), increment of 1/3, Automatic ISO setting via DX code (manual setting is also possible)
Exposure adjustment range	0.25-4.00(±2EV)
Reciprocity failure correction	3-step adjustments
Manual exposure time setting	1/100 sec.-40 min. (52 steps), Time mode setting
Display	LCD display (with adjustable backlight function), LED display for exposure warning and working conditions.
Acceptable cameras	35mm camera (automatic film advance and rewinding), large-format camera (4"X5"), Polaroid camera (3 1/4"X4 1/4")
Others	AE-lock and Multi exposure Reset function for frame count numbers (Large-format camera) With terminal for release from outside
Power consumption	15VA (with AC adapter)

Dimensions



Specifications are subject to change without any obligation on the part of the manufacturer.

OLYMPUS®

OLYMPUS OPTICAL CO., LTD.
San-Ei building, 22-2, Nishi Shinjuku 1-chome, Shinjuku-ku, Tokyo, Japan

OLYMPUS OPTICAL CO. (EUROPA) GMBH.
Postfach 10 49 08, 20034, Hamburg, Germany

OLYMPUS AMERICA INC. (FOR LIFE SCIENCE/MEDICAL APPLICATIONS)
2 Corporate Center Drive, Melville, NY 11747-3157, U.S.A.

OLYMPUS INDUSTRIAL AMERICA, INC. (FOR INDUSTRIAL APPLICATIONS)
1 Corporate Drive, Orangeburg, NY 10962, U.S.A.

OLYMPUS SINGAPORE PTE LTD.
491B River Valley Road, #12-01/04 Valley Point Office Tower, Singapore 248373

OLYMPUS OPTICAL CO. (U.K.) LTD.
2-8 Honduras Street, London EC1Y 0TX, United Kingdom.

OLYMPUS AUSTRALIA PTY. LTD.
31 Gilby Road, Mt. Waverley, VIC 3149, Melbourne, Australia.

OLYMPUS LATIN AMERICA, INC.
6100 Blue Lagoon Drive, Suite 390 Miami, FL 33126-2087, U.S.A.

www.olympus.com

